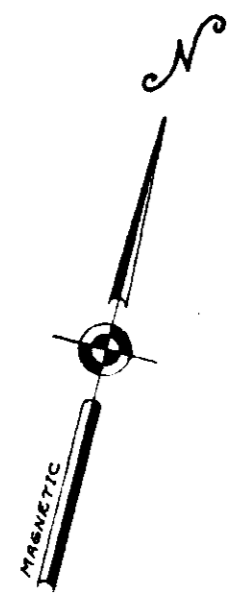
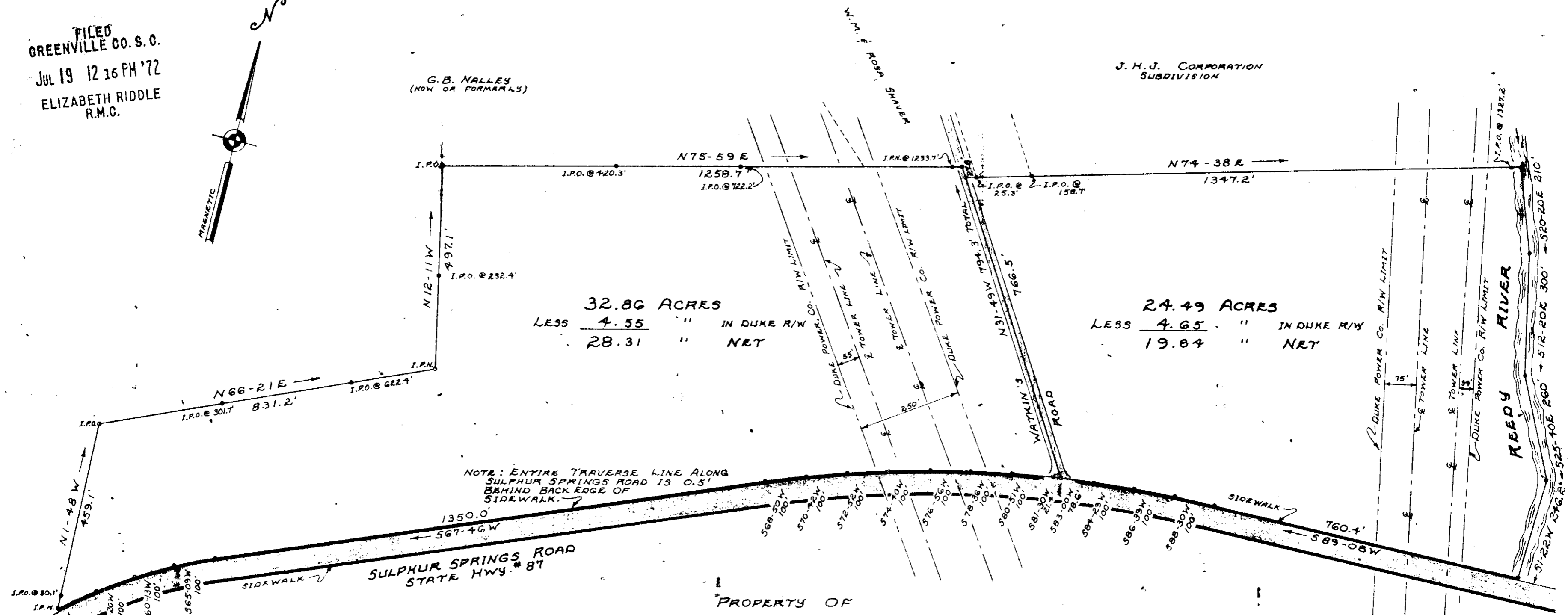


FILED
GREENVILLE CO. S. C.
JUL 19 12 16 PM '72
ELIZABETH RIDDLE
R.M.C.



G. B. NALLEY
(NOW OR FORMERLY)

J. H. J. CORPORATION
SUBDIVISION



32.86 ACRES
LESS 4.55 " IN DUKE R/W
28.31 " NET

24.49 ACRES
LESS 4.65 " IN DUKE R/W
19.84 " NET

NOTE: ENTIRE TRAVERSE LINE ALONG
SULPHUR SPRINGS ROAD IS 0.5'
BEHIND BACK EDGE OF
SIDEWALK.

PROPERTY OF

RUBY R. GRAHAM, ET AL

PARIS MOUNTAIN TOWNSHIP

GREENVILLE CO., SOUTH CAROLINA

FEB. 4, 1972 SCALE 1" = 200 FEET

JUL 19 1972 45-8
RECORDING FEE
PAID \$ 3.00

1740



enwright associates

ENGINEERS

GREENVILLE, S. C.